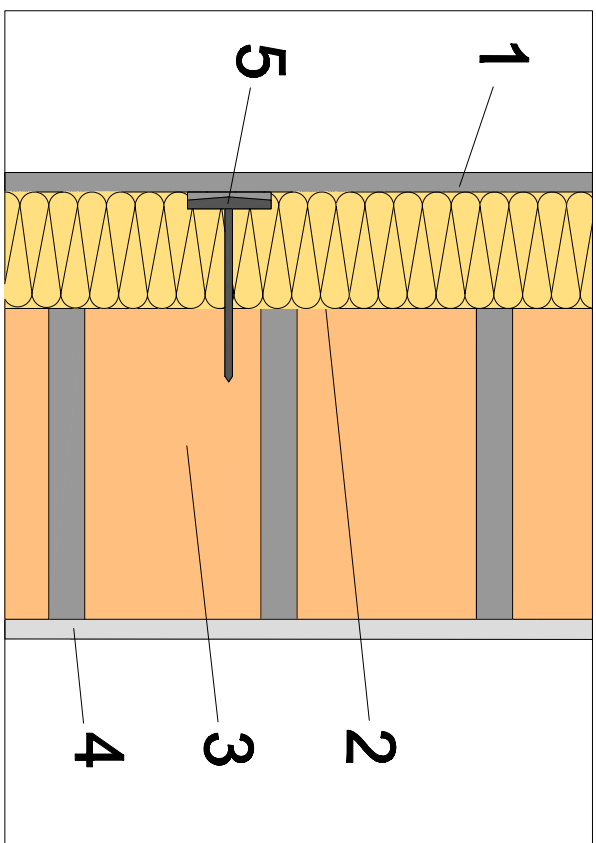
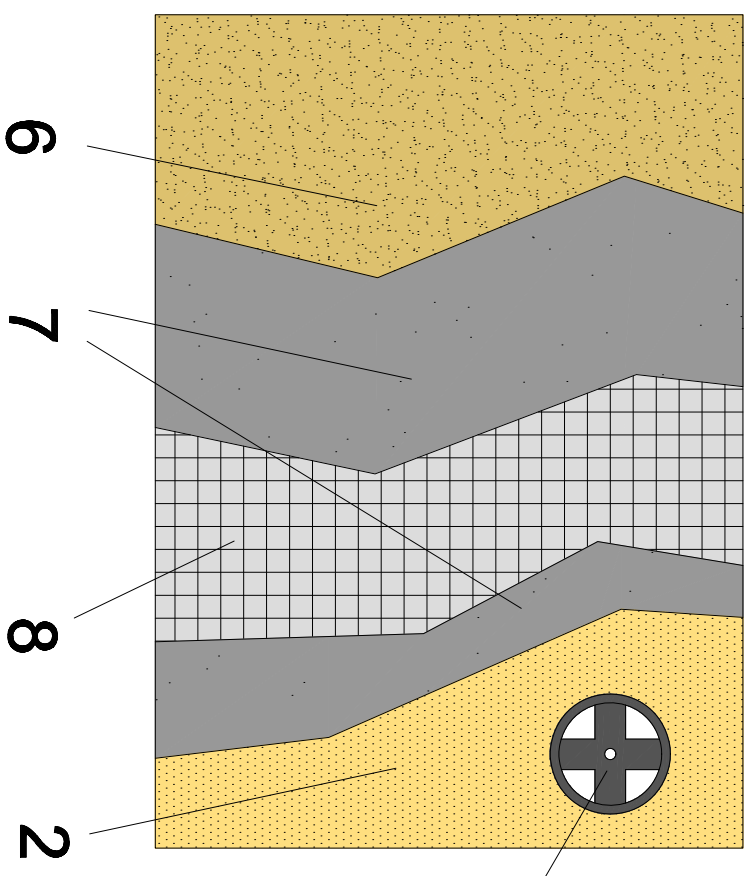


DETALLE DEL REVESTIMIENTO EXTERIOR



- 1 - REVESTIMIENTO EXTERIOR.
- 2 - LANA MINERAL ISOVER.
- 3 - FÁBRICA DE LADRILLO CERÁMICO.
- 4 - REVESTIMIENTO INTERIOR.
- 5 - ANCLAJE SETA EXPANSIVA.
- 6 - MORTERO DE TERMINACIÓN.



Item	Quantity	Trade/Name	description	material	dimension etc	Article No./Reference
Approved by	Checked by	Approved by - date	Finance	DOB		
A.P.P	N.B.P	DIC-20/06/11	F4.1 ETICS	BD06/11		
SG ISOVER						F4.1 ETICS
Edition						1