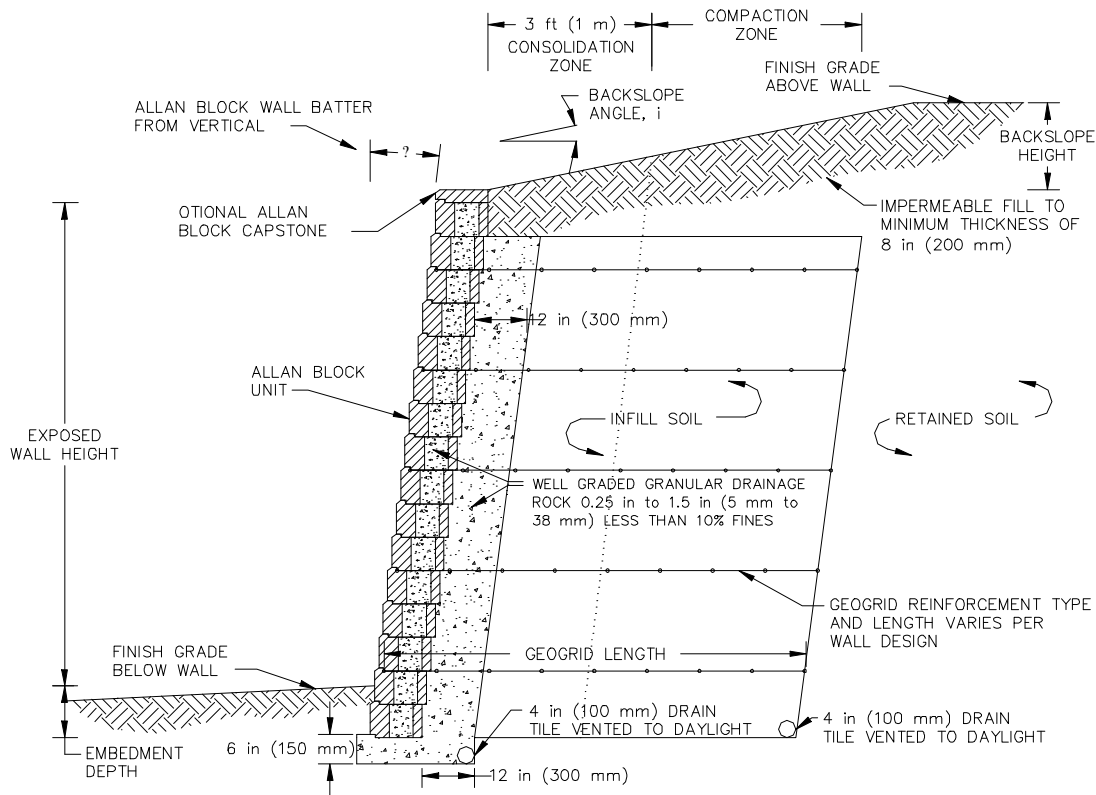
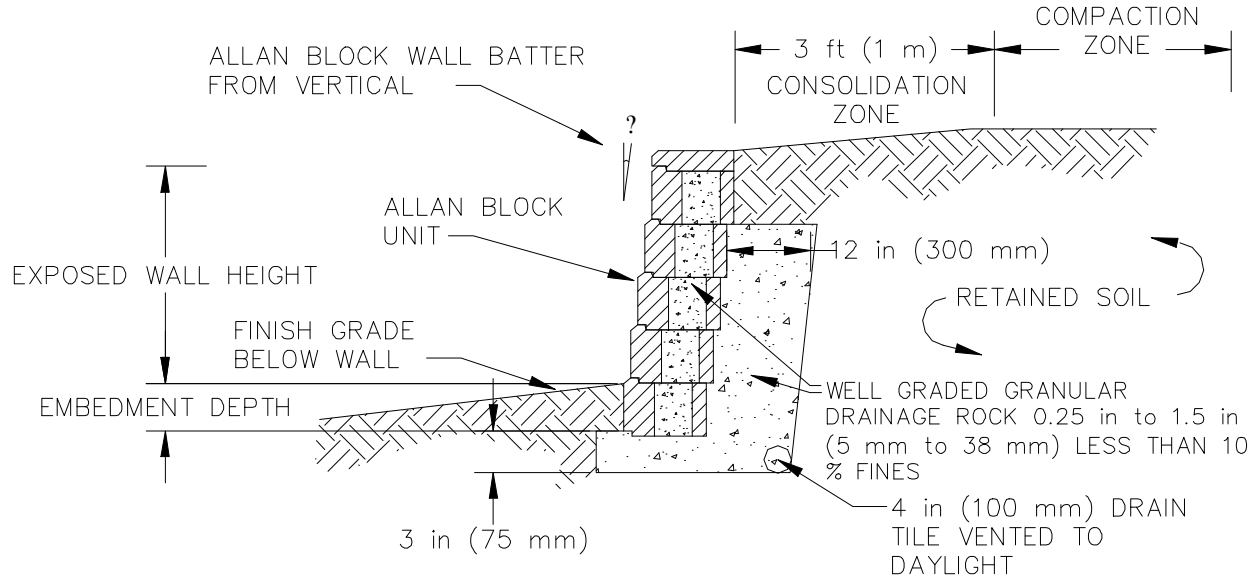


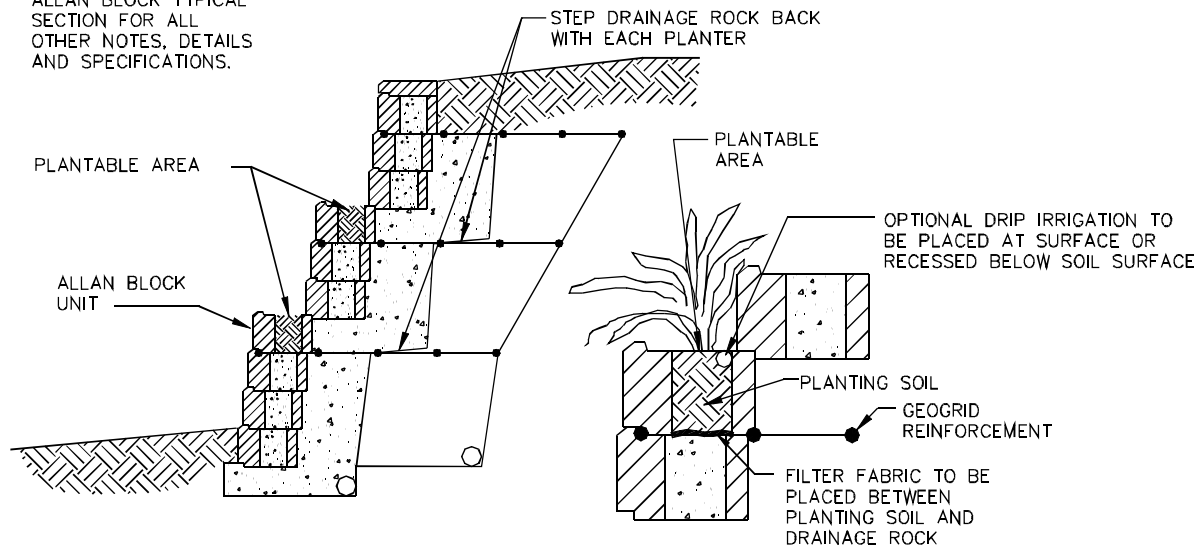
SECCION TIPICA MURO CON GEOMALLA



SECCION TIPICA MURO DE GRAVEDAD

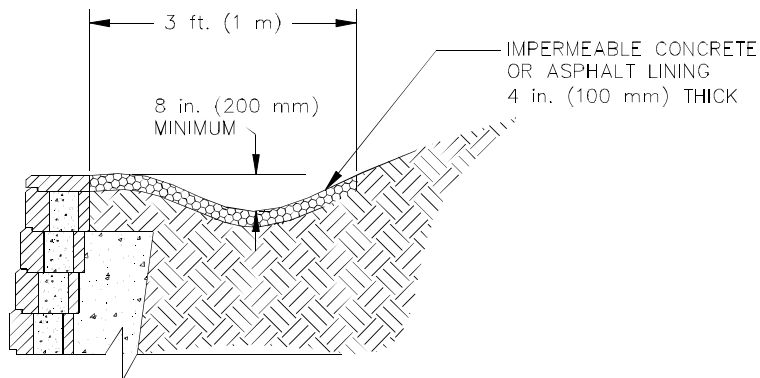


* REFER TO SECTION 1:
ALLAN BLOCK TYPICAL
SECTION FOR ALL
OTHER NOTES, DETAILS
AND SPECIFICATIONS.

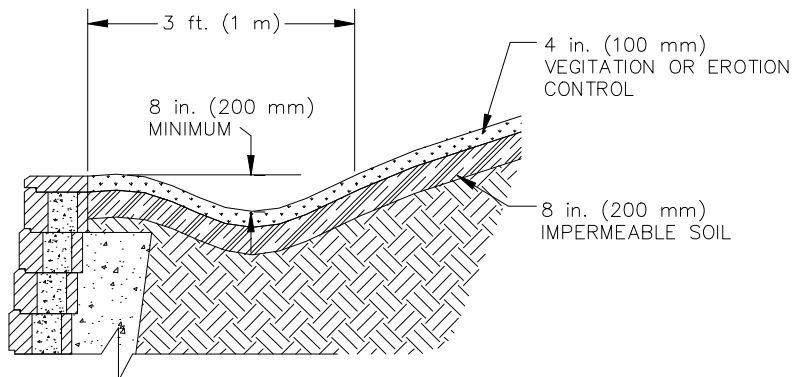


DETAIL AT EACH PLANTER

* REFER TO SECTION 1:
ALLAN BLOCK TYPICAL
SECTION FOR ALL
OTHER NOTES, DETAILS
AND SPECIFICATIONS.

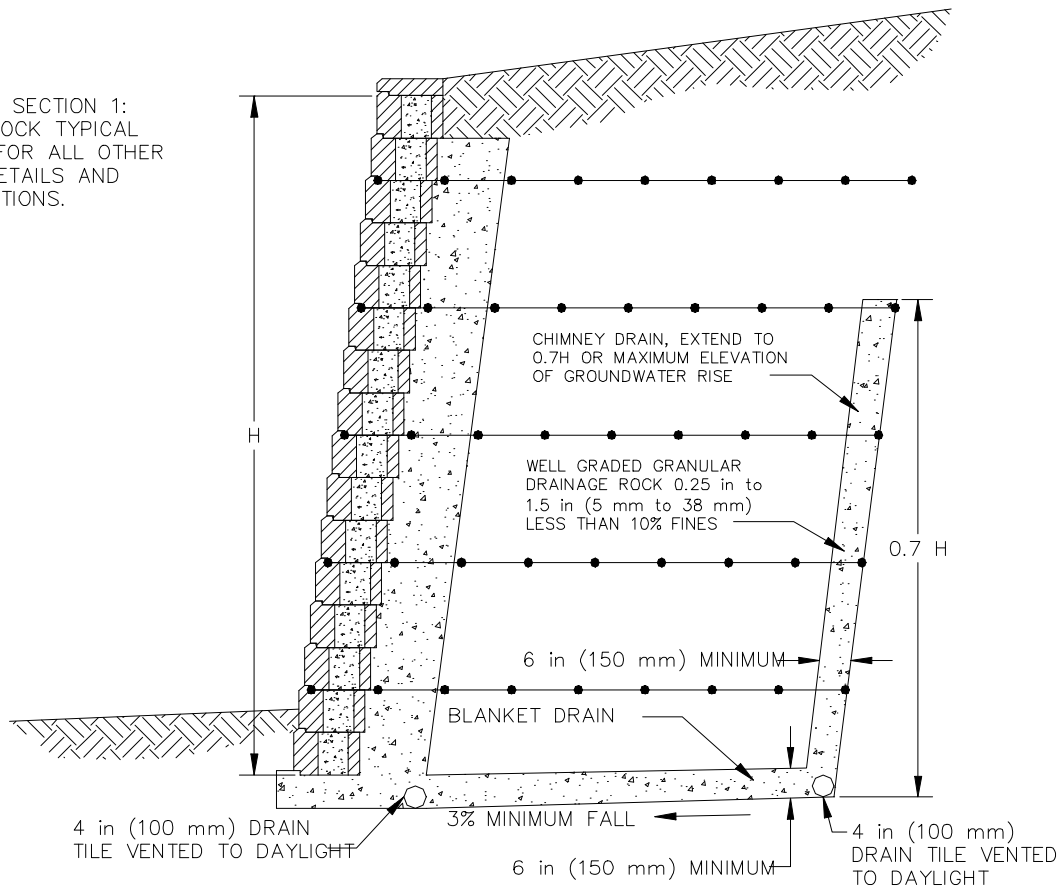


* REFER TO SECTION 1:
ALLAN BLOCK TYPICAL
SECTION FOR ALL
OTHER NOTES, DETAILS
AND SPECIFICATIONS.



CHIMENEA DE DRENAJE

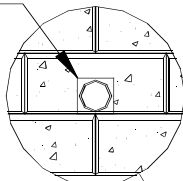
*REFER TO SECTION 1:
ALLAN BLOCK TYPICAL
SECTION FOR ALL OTHER
NOTES, DETAILS AND
SPECIFICATIONS.



PUNTOS DE DRENAJE EN LA BASE DEL MURO

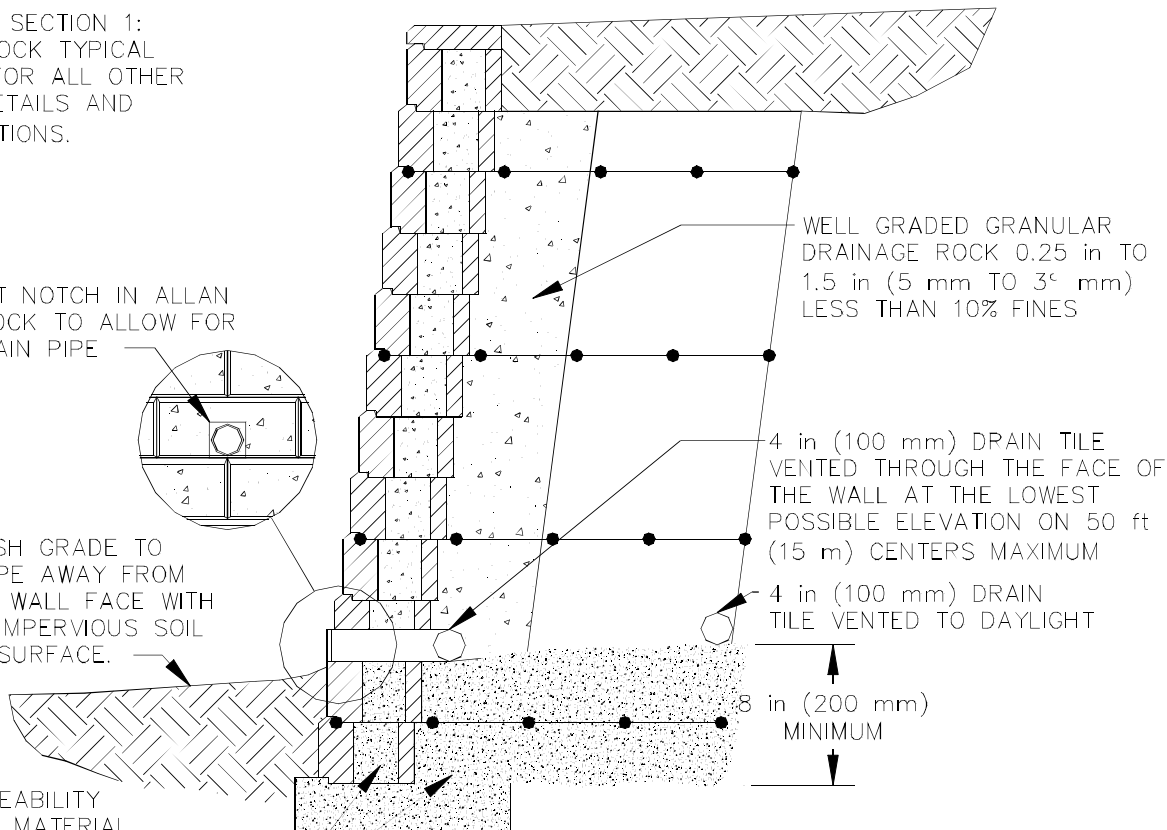
*REFER TO SECTION 1:
ALLAN BLOCK TYPICAL
SECTION FOR ALL OTHER
NOTES, DETAILS AND
SPECIFICATIONS.

CUT NOTCH IN ALLAN
BLOCK TO ALLOW FOR
DRAIN PIPE



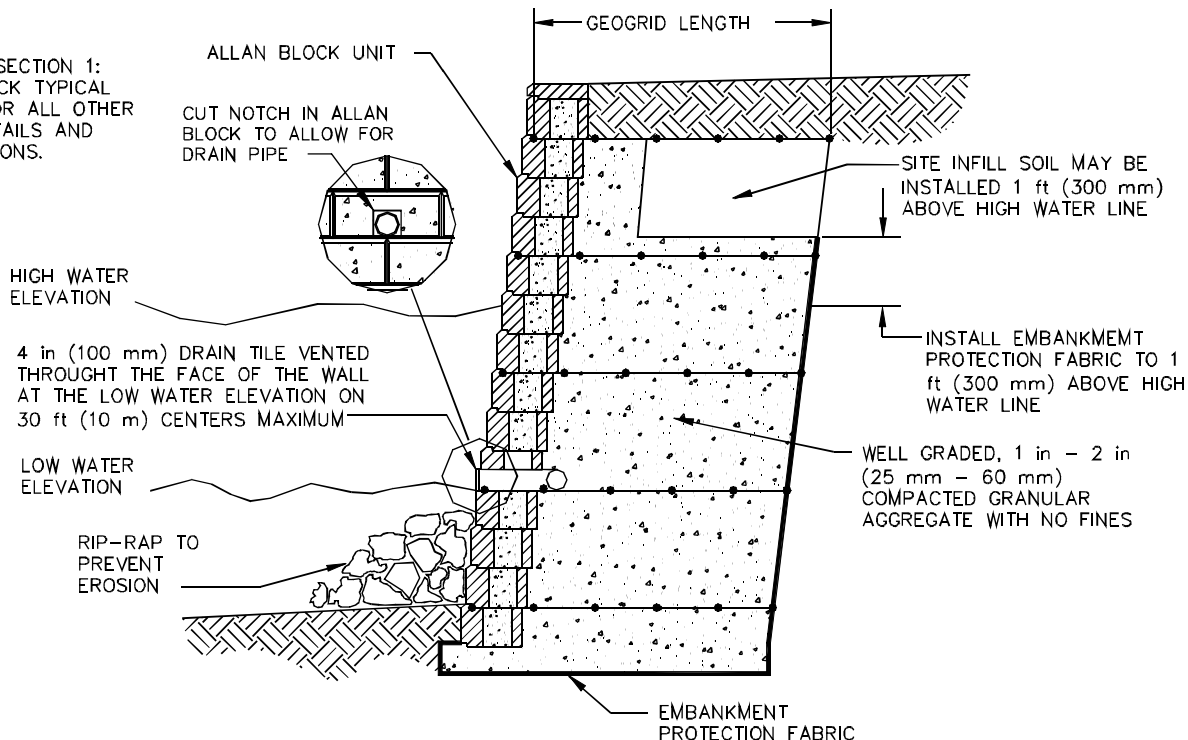
FINISH GRADE TO
SLOPE AWAY FROM
THE WALL FACE WITH
AN IMPERVIOUS SOIL
OR SURFACE.

LOW PERMEABILITY
GRANULAR MATERIAL
PLACED IN CORES OF THE
ALLAN BLOCK AS WELL AS
IN THE INFILL SOIL



MURO CON GEOMALLA EN AGUA

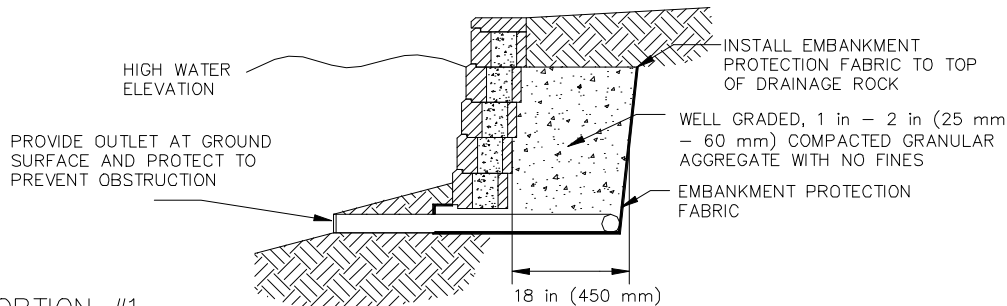
*REFER TO SECTION 1:
ALLAN BLOCK TYPICAL
SECTION FOR ALL OTHER
NOTES, DETAILS AND
SPECIFICATIONS.



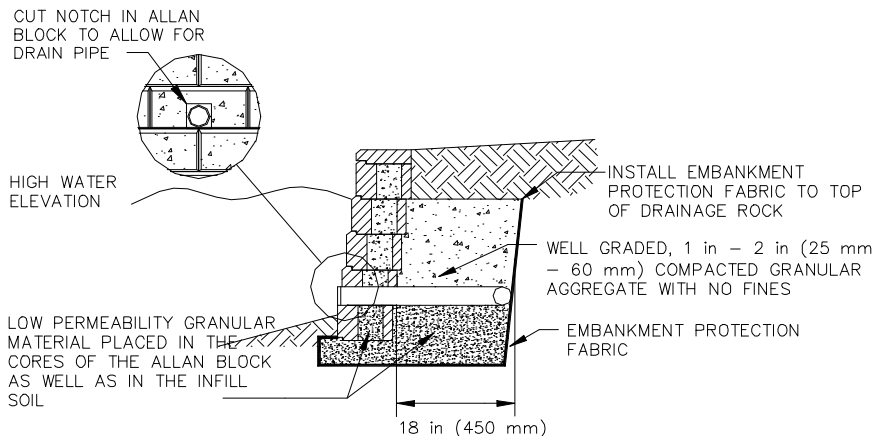
ALLAN BLOCK TYPICAL SECTION – WATER APPLICATION

MURO DE GRAVEDAD EN AGUA

REFER TO SECTION 2:
ALLAN BLOCK GRAVITY
WALL TYPICAL SECTION
FOR ALL OTHER NOTES,
DETAILS AND
SPECIFICATIONS.



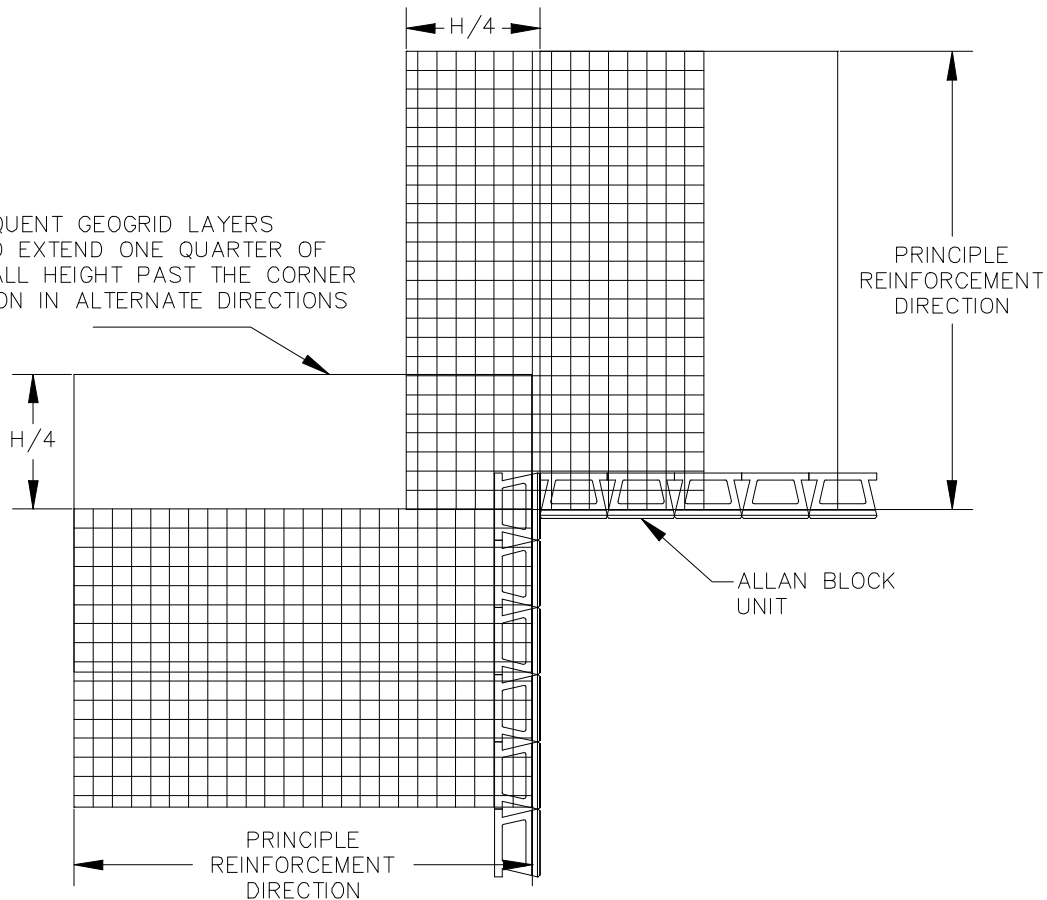
OPTION #1



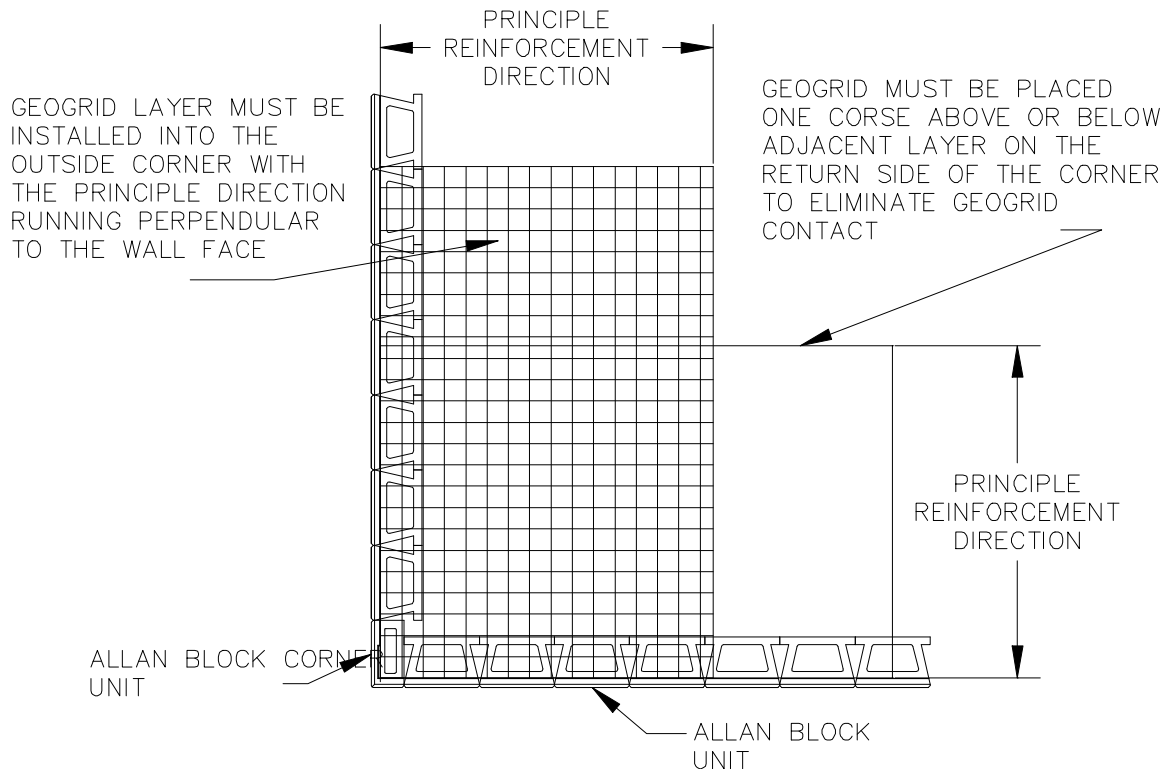
OPTION #2

SOLAPE DE GEOMALLA EN ESQUINA INTERIOR

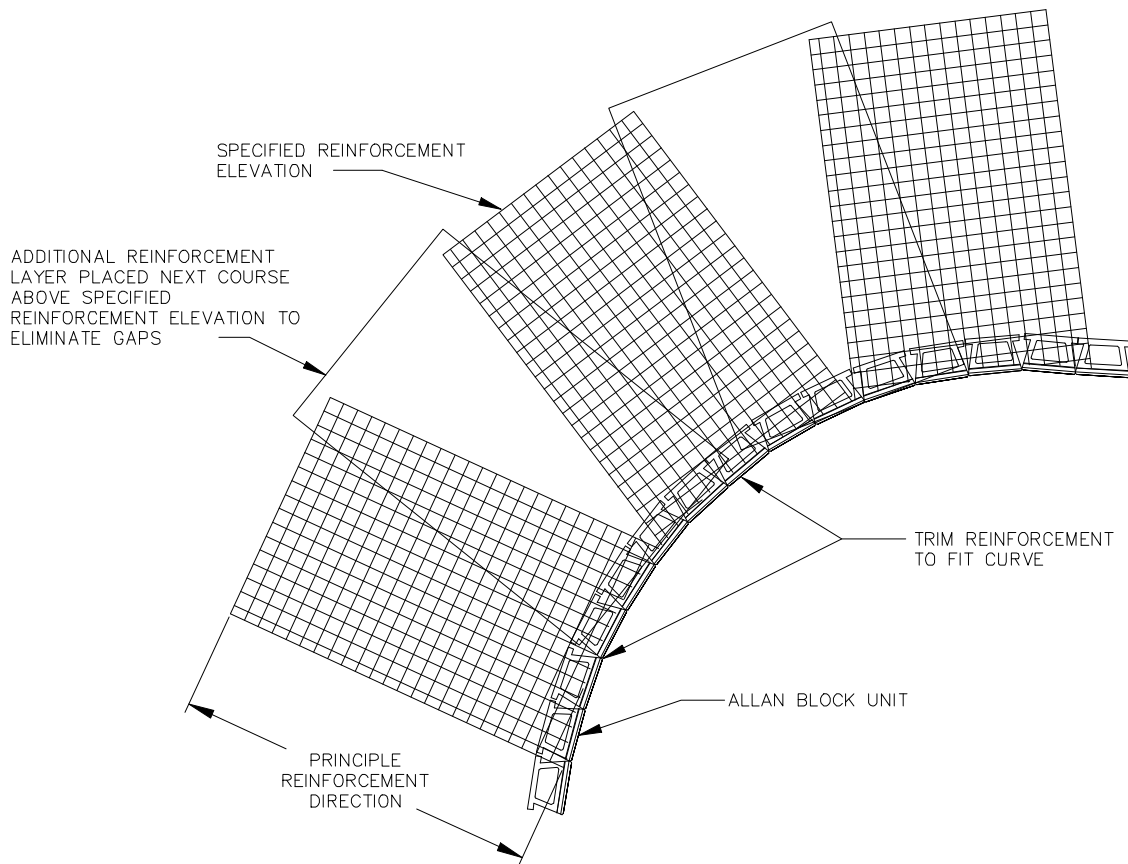
SUBSEQUENT GEOGRID LAYERS SHOULD EXTEND ONE QUARTER OF THE WALL HEIGHT PAST THE CORNER LOCATION IN ALTERNATE DIRECTIONS



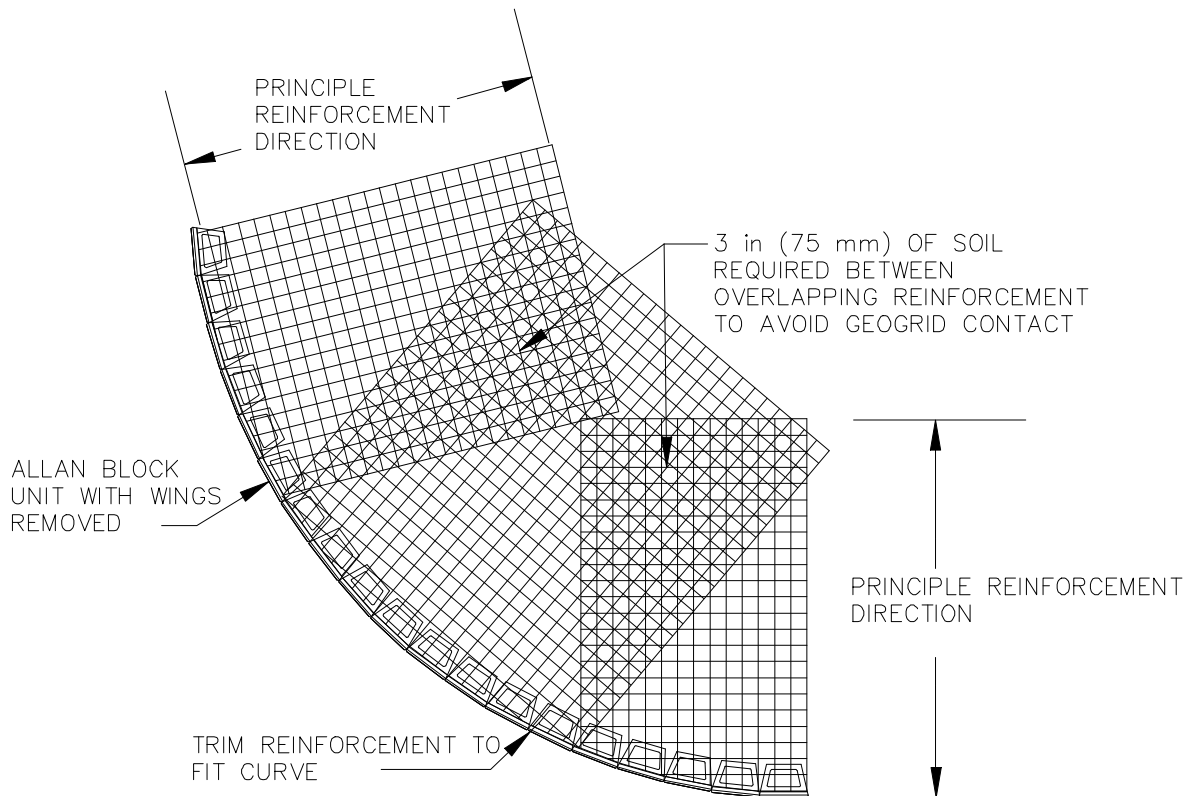
SOLAPE DE GEOMALLA EN ESQUINA EXTERIOR



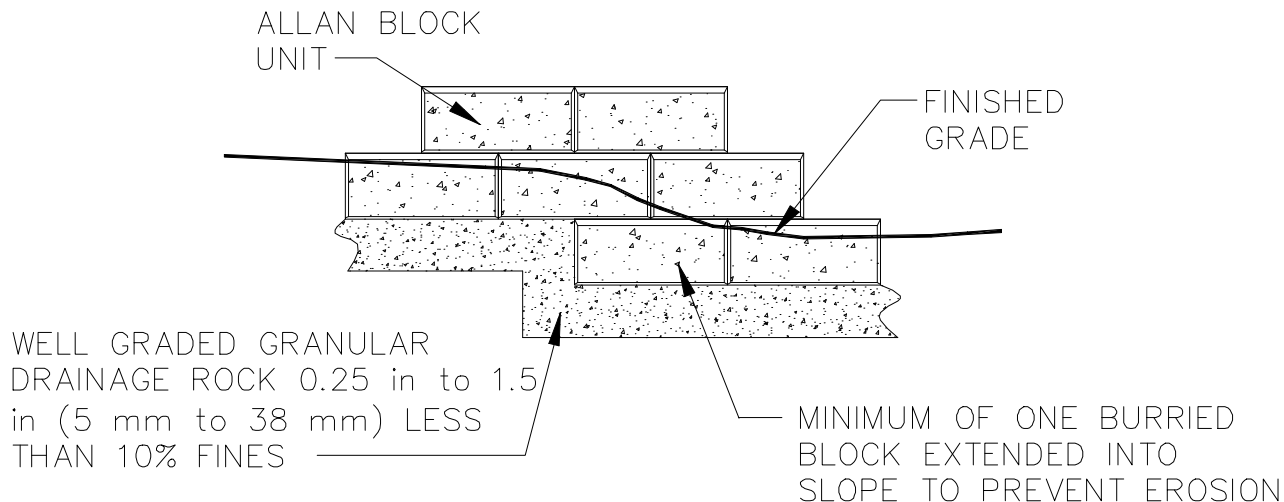
SOLAPE DE GEOMALLA EN CURVA INTERIOR



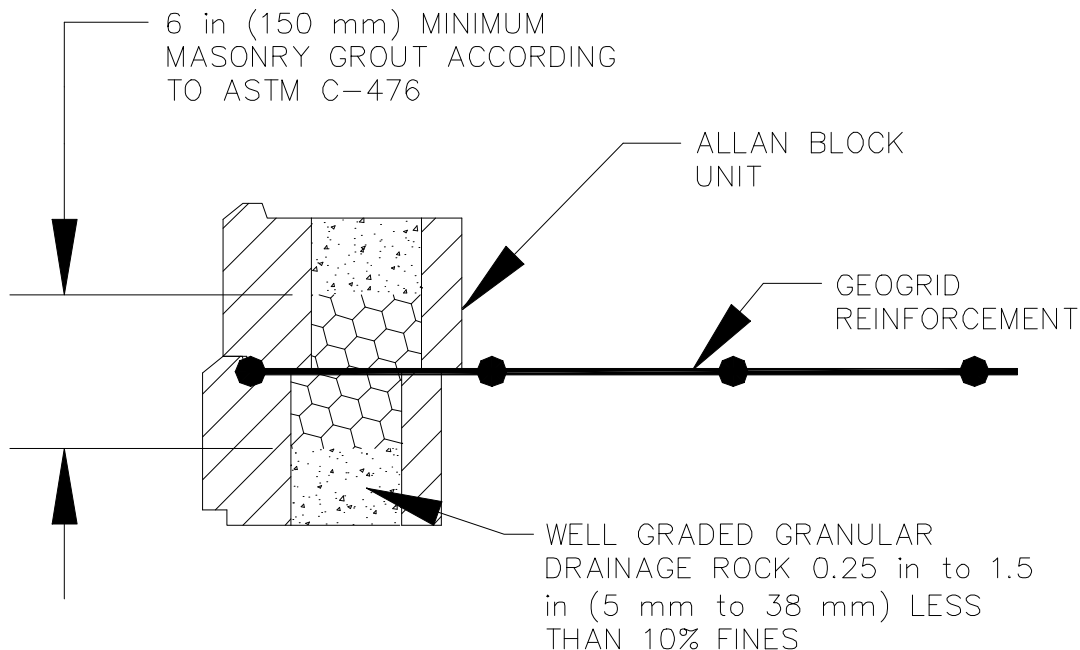
SOLAPE DE GEOMALLA EN CURVA EXTERIOR



ESCALON EN LA BASE

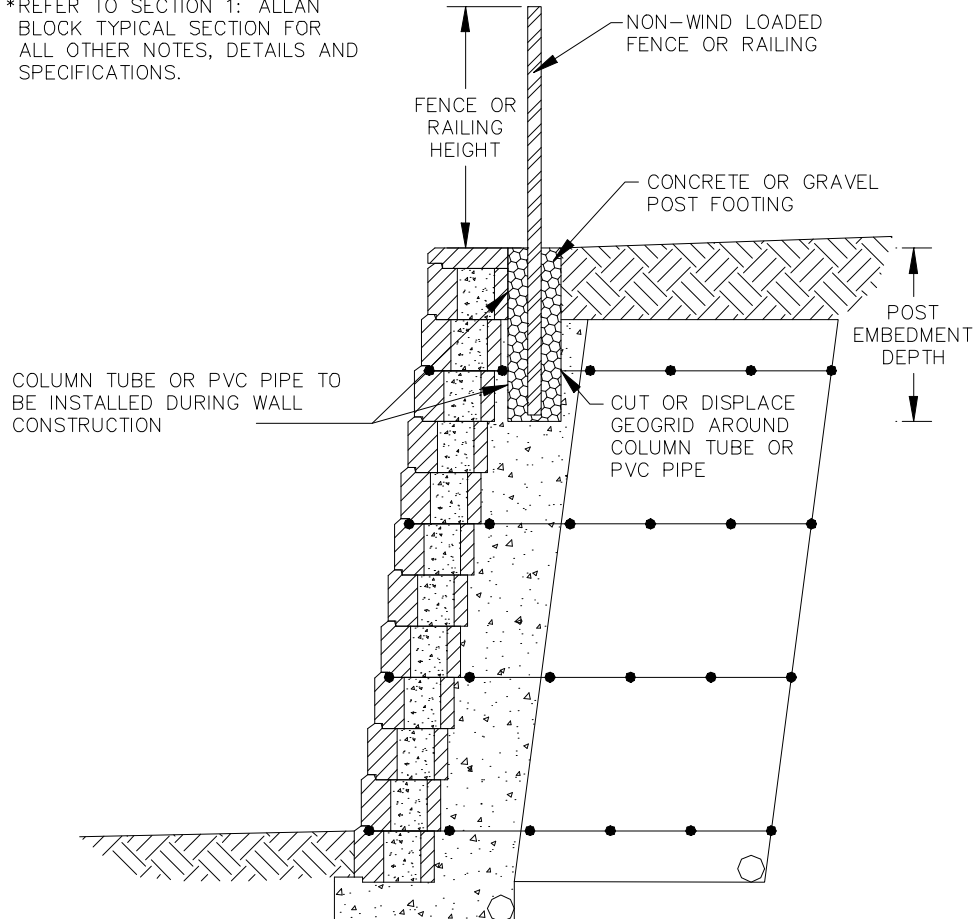


CONEXION CON MORTERO



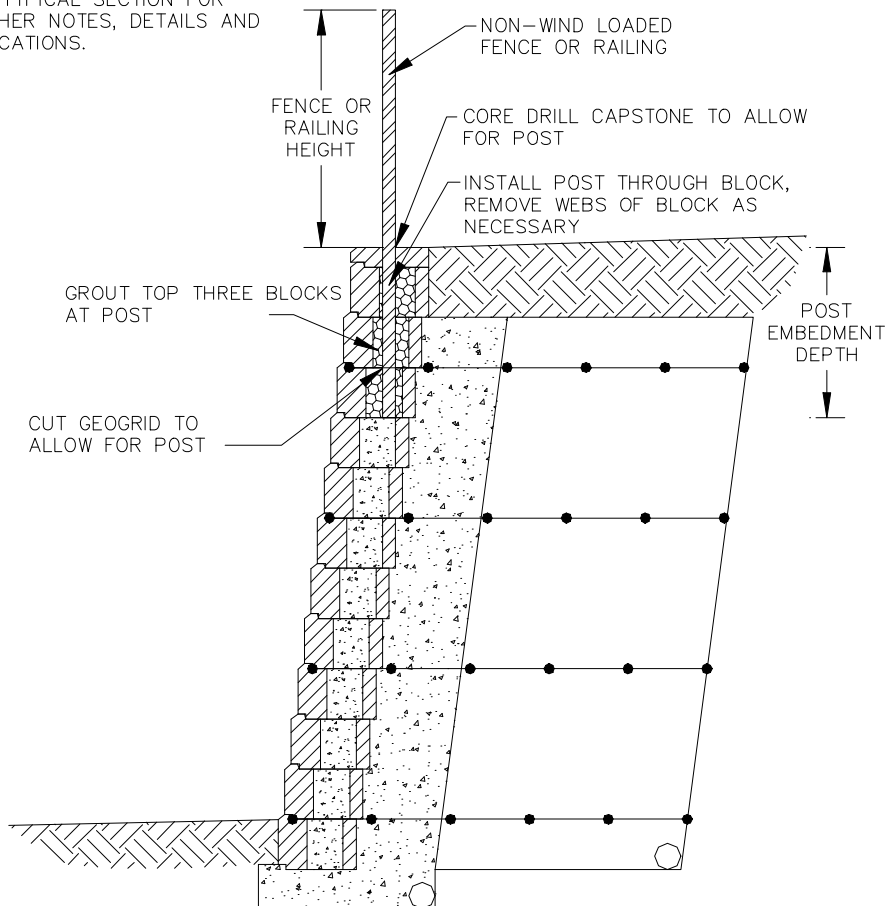
PETO O BARANDILLA SIN ESFUERZOS 1

*REFER TO SECTION 1: ALLAN BLOCK TYPICAL SECTION FOR ALL OTHER NOTES, DETAILS AND SPECIFICATIONS.



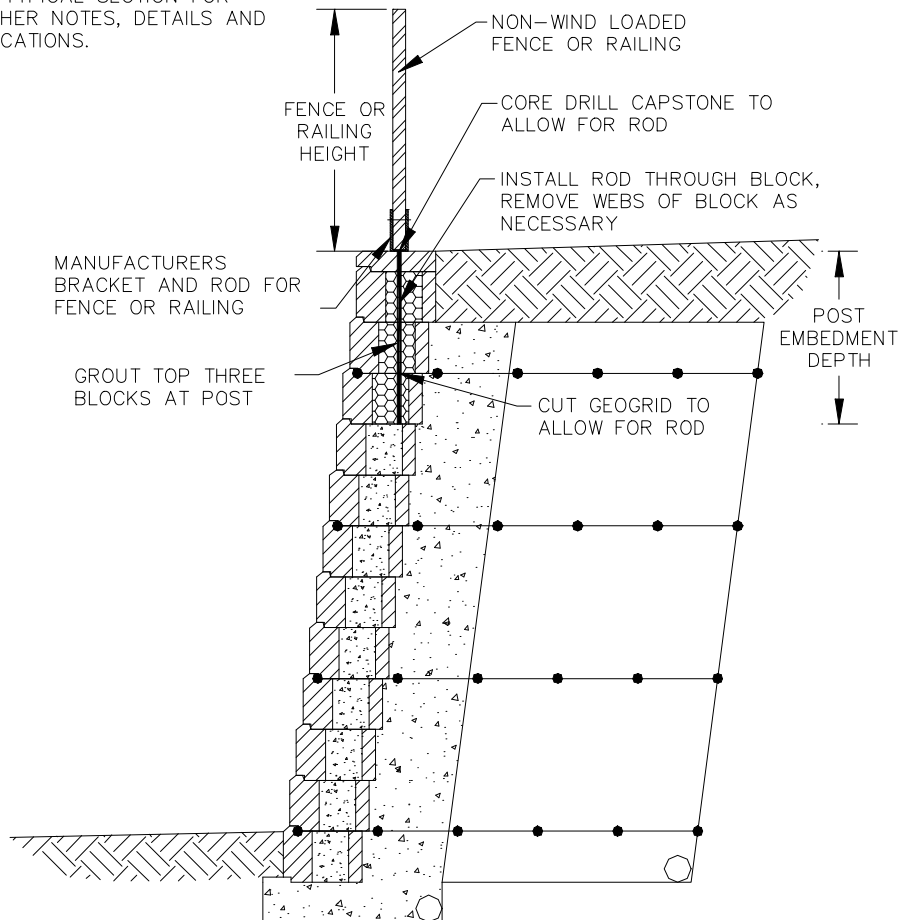
PETO O BARANDILLA SIN ESFUERZOS 2

*REFER TO SECTION 1: ALLAN BLOCK TYPICAL SECTION FOR ALL OTHER NOTES, DETAILS AND SPECIFICATIONS.



PETO O BARANDILLA SIN ESFUERZOS 3

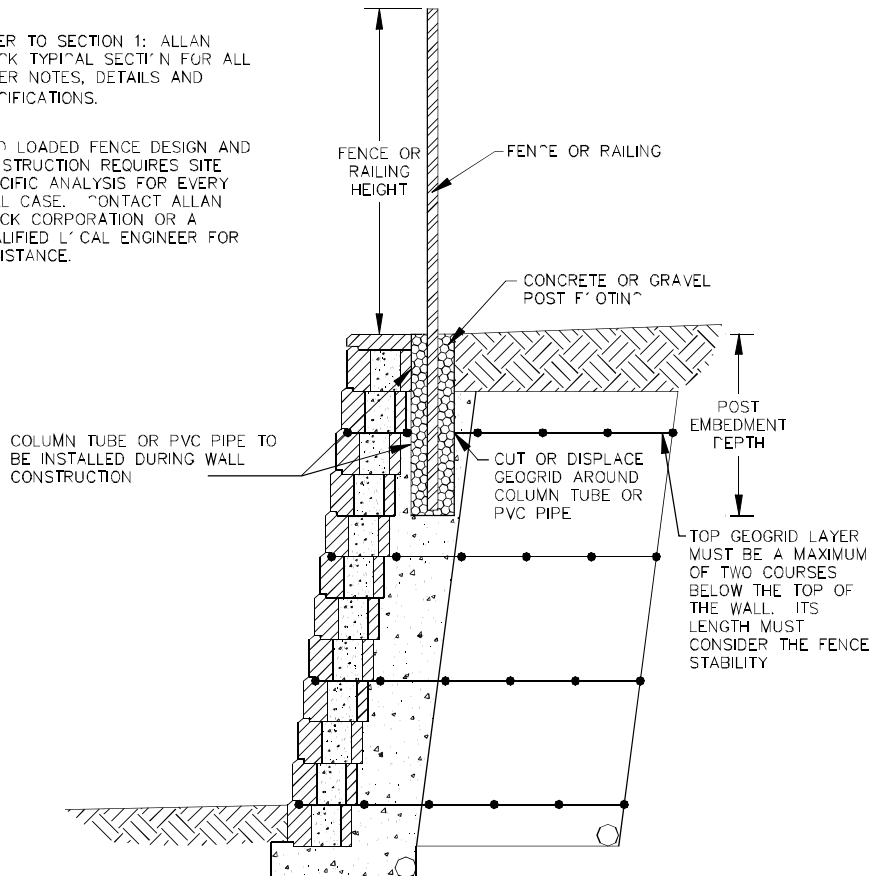
*REFER TO SECTION 1: ALLAN BLOCK TYPICAL SECTION FOR ALL OTHER NOTES, DETAILS AND SPECIFICATIONS.



PETO O BARANDILLA CON ESFUERZOS 1

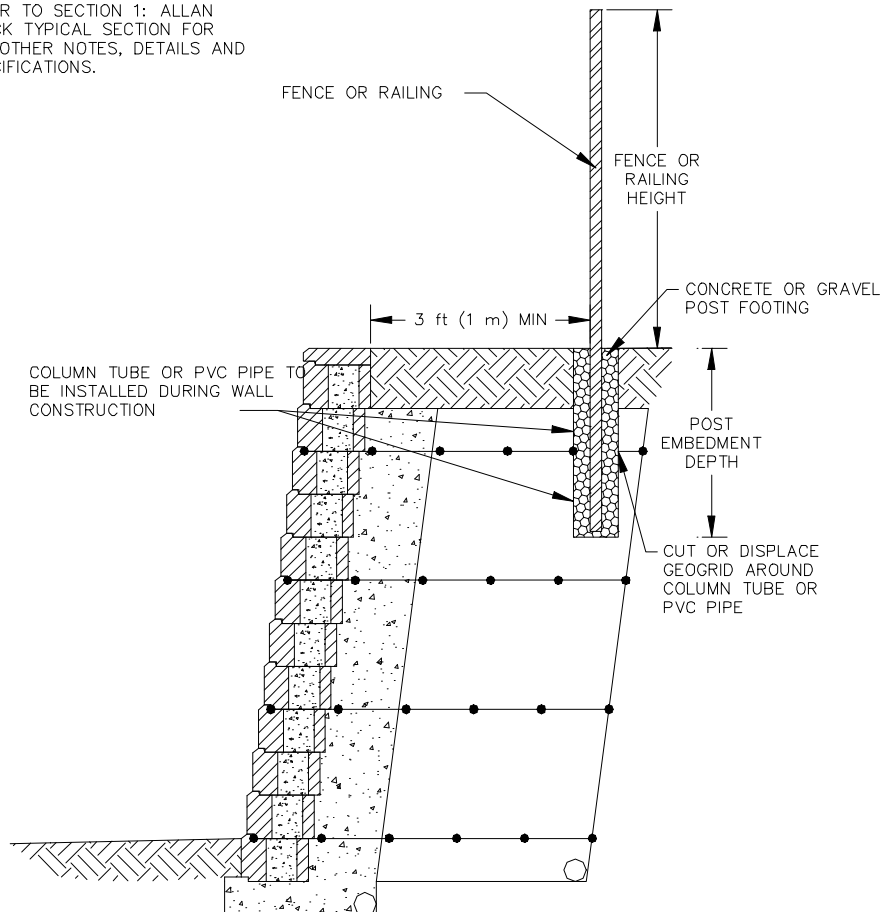
*REFER TO SECTION 1: ALLAN BLOCK TYPICAL SECTION FOR ALL OTHER NOTES, DETAILS AND SPECIFICATIONS.

*WIND LOADED FENCE DESIGN AND CONSTRUCTION REQUIRES SITE SPECIFIC ANALYSIS FOR EVERY WALL CASE. CONTACT ALLAN BLOCK CORPORATION OR A QUALIFIED LOCAL ENGINEER FOR ASSISTANCE.



PETO O BARANDILLA CON ESFUERZOS 2

*REFER TO SECTION 1: ALLAN BLOCK TYPICAL SECTION FOR ALL OTHER NOTES, DETAILS AND SPECIFICATIONS.

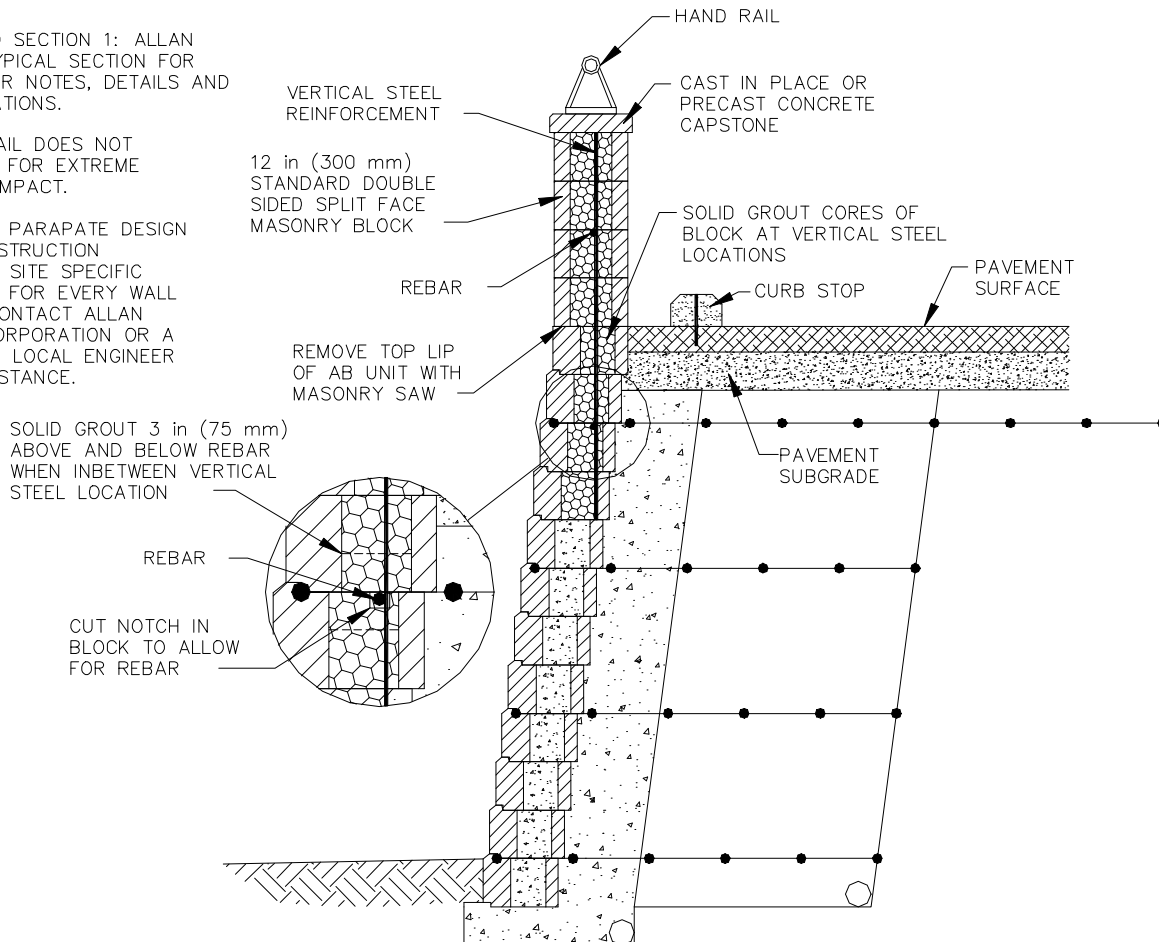


PARAPETO DE MAMPOSTERIA

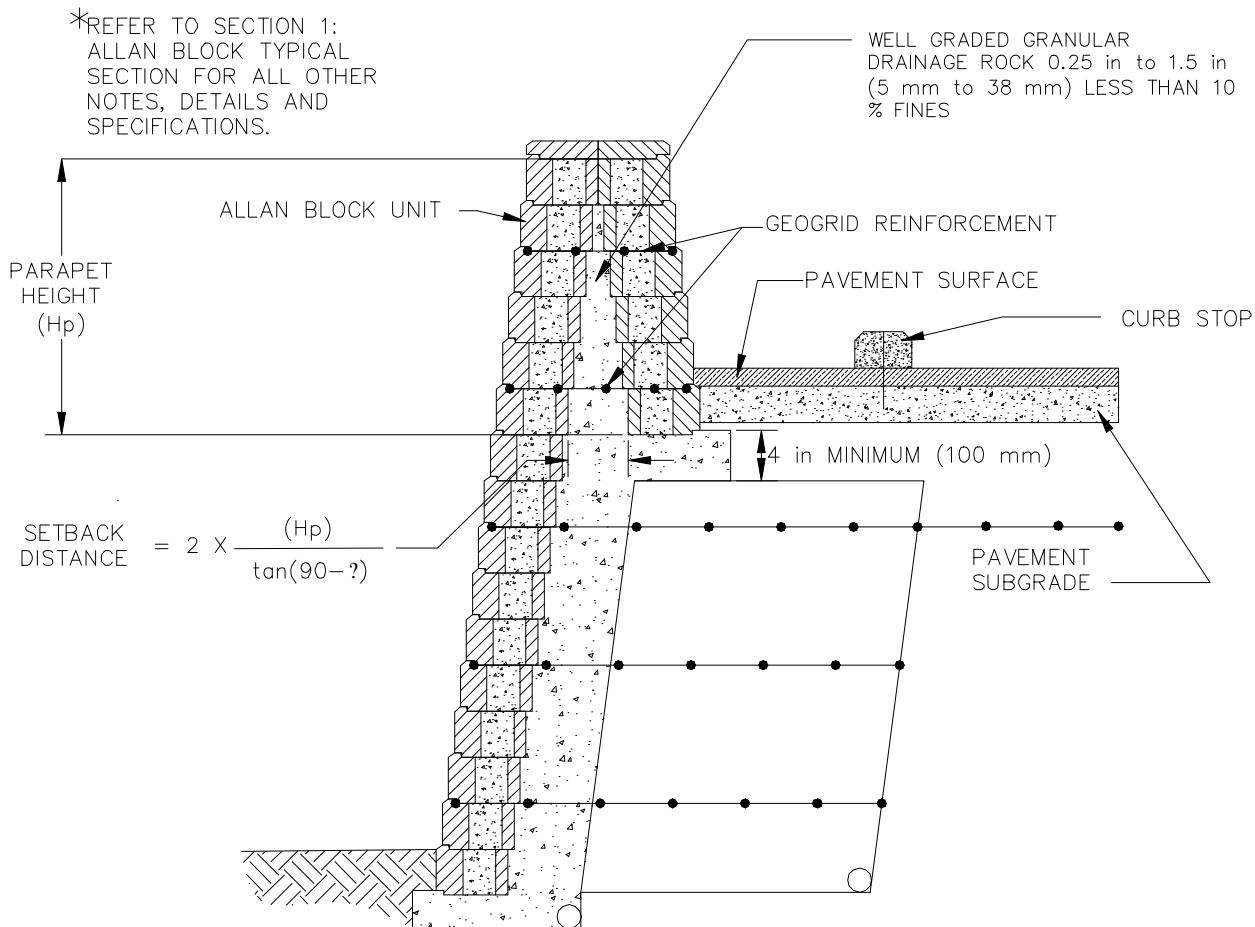
*REFER TO SECTION 1: ALLAN BLOCK TYPICAL SECTION FOR ALL OTHER NOTES, DETAILS AND SPECIFICATIONS.

*THIS DETAIL DOES NOT ACCOUNT FOR EXTREME VEHICLE IMPACT.

*MASONRY PARAPATE DESIGN AND CONSTRUCTION REQUIRES SITE SPECIFIC ANALYSIS FOR EVERY WALL CASE. CONTACT ALLAN BLOCK CORPORATION OR A QUALIFIED LOCAL ENGINEER FOR ASSISTANCE.



DOBLE PARAPETO DE MAMPOSTERIA

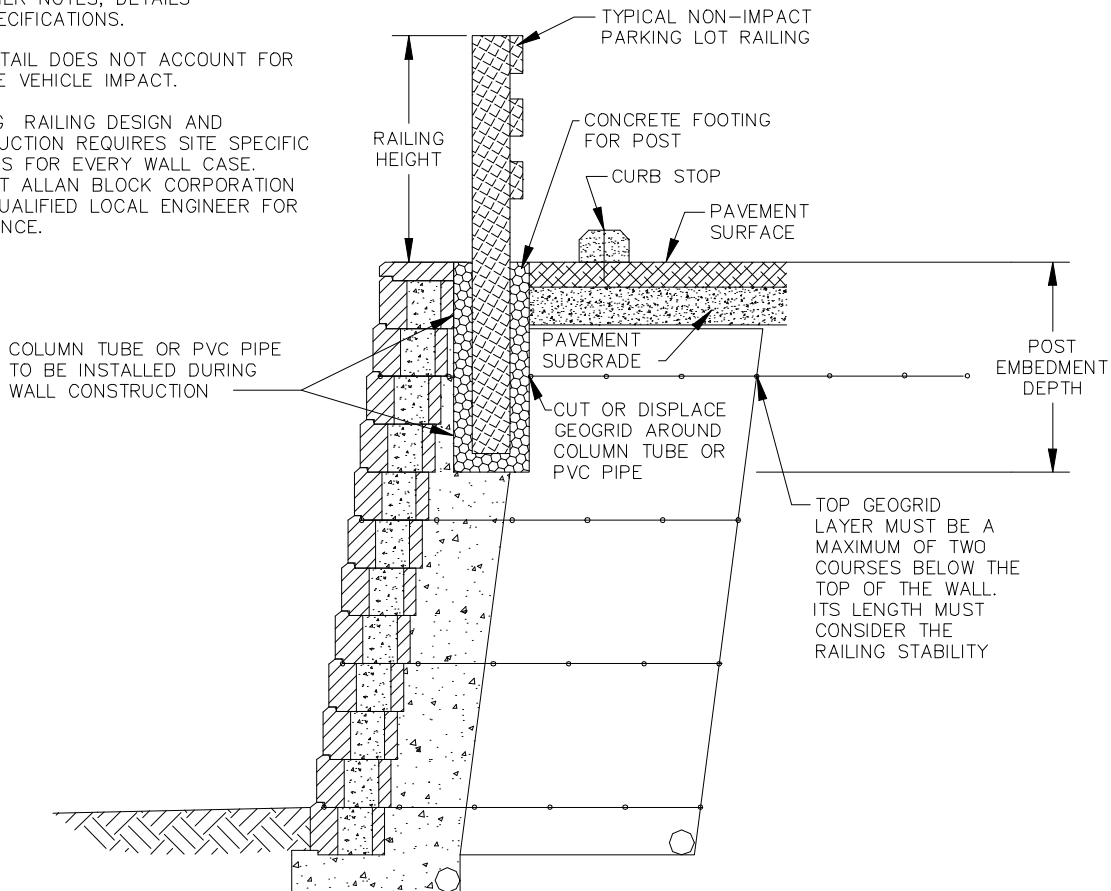


BARRERA DE PARKING SIN IMPACTO

* REFER TO SECTION 1: ALLAN BLOCK TYPICAL SECTION FOR ALL OTHER NOTES, DETAILS AND SPECIFICATIONS.

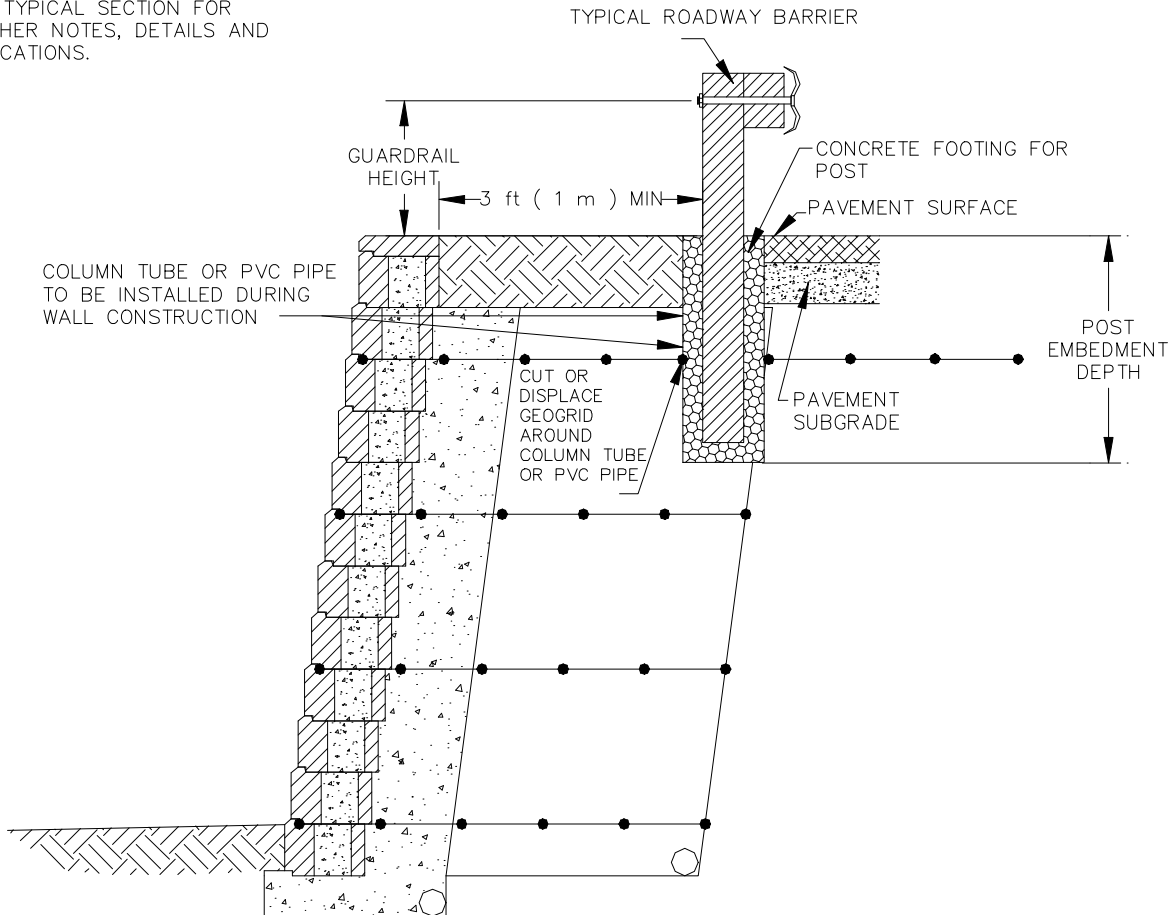
* THIS DETAIL DOES NOT ACCOUNT FOR EXTREME VEHICLE IMPACT.

* PARKING RAILING DESIGN AND CONSTRUCTION REQUIRES SITE SPECIFIC ANALYSIS FOR EVERY WALL CASE. CONTACT ALLAN BLOCK CORPORATION OR A QUALIFIED LOCAL ENGINEER FOR ASSISTANCE.



BARRERA DE PARKING CON IMPACTO

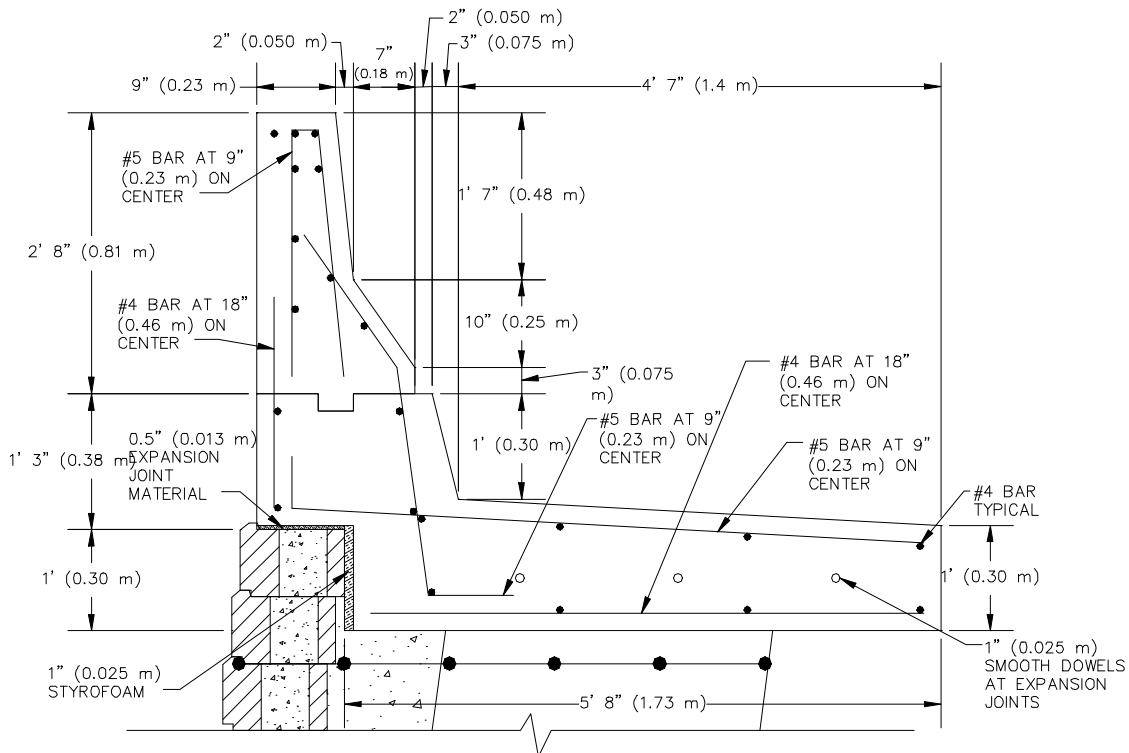
*REFER TO SECTION 1: ALLAN BLOCK TYPICAL SECTION FOR ALL OTHER NOTES, DETAILS AND SPECIFICATIONS.



PARAPETO Y SOLERA DE HORMIGON

*REFER TO SECTION 1:
ALLAN BLOCK TYPICAL
SECTION FOR ALL OTHER
NOTES, DETAILS AND
SPECIFICATIONS.

*ENSURE THAT JERSEY
BARRIER DESIGN IS IN
ACCORDANCE WITH LOCAL
MOTH OR DOT
SPECIFICATIONS.

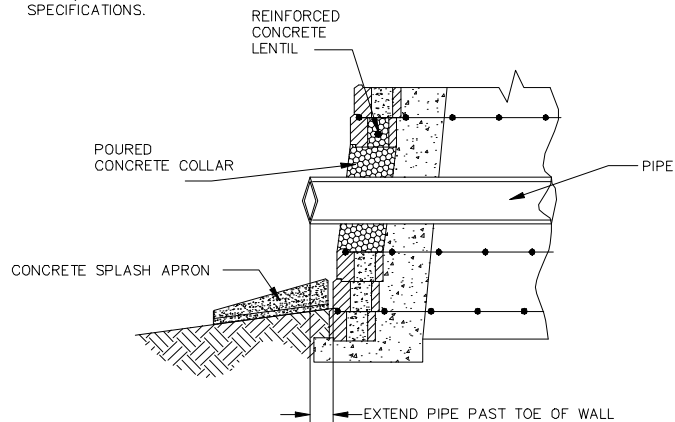


CONCRETE CONSTRUCTION NOTES:

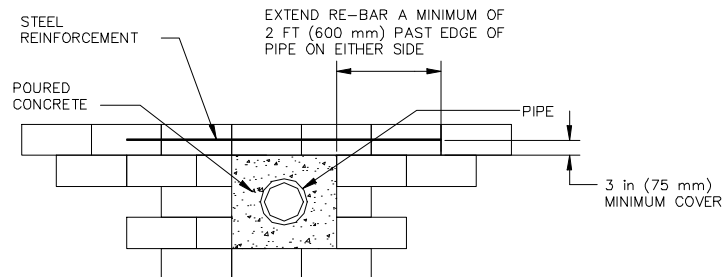
1. POSITIVE BOND BREAKER AND EXPANSION JOINT MATERIAL MUST BE PROVIDED BETWEEN CAST IN PLACE SLAB AND ALLAN BLOCK UNITS
2. CONCRETE MINIMUM COMPRESSIVE STRENGTH $f'_c = 3500$ psi (24 MPa) REBAR MINIMUM TENSILE STRENGTH $f_y = 65$ ksi (45 MPa)
3. CAULK EXPANSION JOINT 4" (0.10 m) ABOVE FINISHED GRADE
4. EXPANSION JOINTS ARE AT 30' (9 m) ON CENTER MAXIMUM AND 20' (6 m) ON CENTER MINIMUM
5. CONTROL JOINTS ARE AT 10' (3 m) ON CENTER

EVACUACION DE PLUVIALES CON COLLAR DE HORMIGON

* REFER TO SECTION 1:
ALLAN BLOCK TYPICAL
SECTION FOR ALL OTHER
NOTES, DETAILS AND
SPECIFICATIONS.

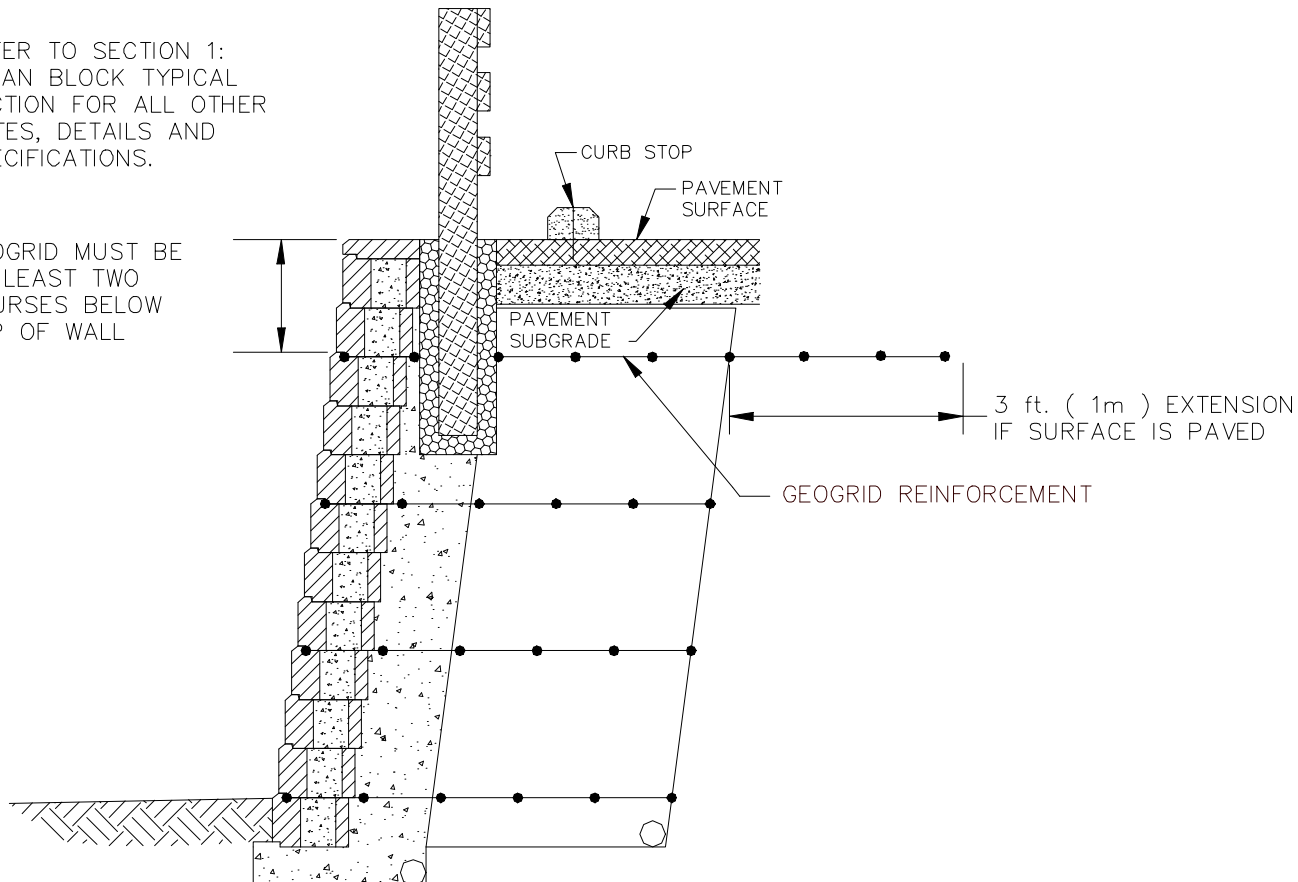


*REFER TO SECTION 1:
ALLAN BLOCK TYPICAL
SECTION FOR ALL OTHER
NOTES, DETAILS AND
SPECIFICATIONS.



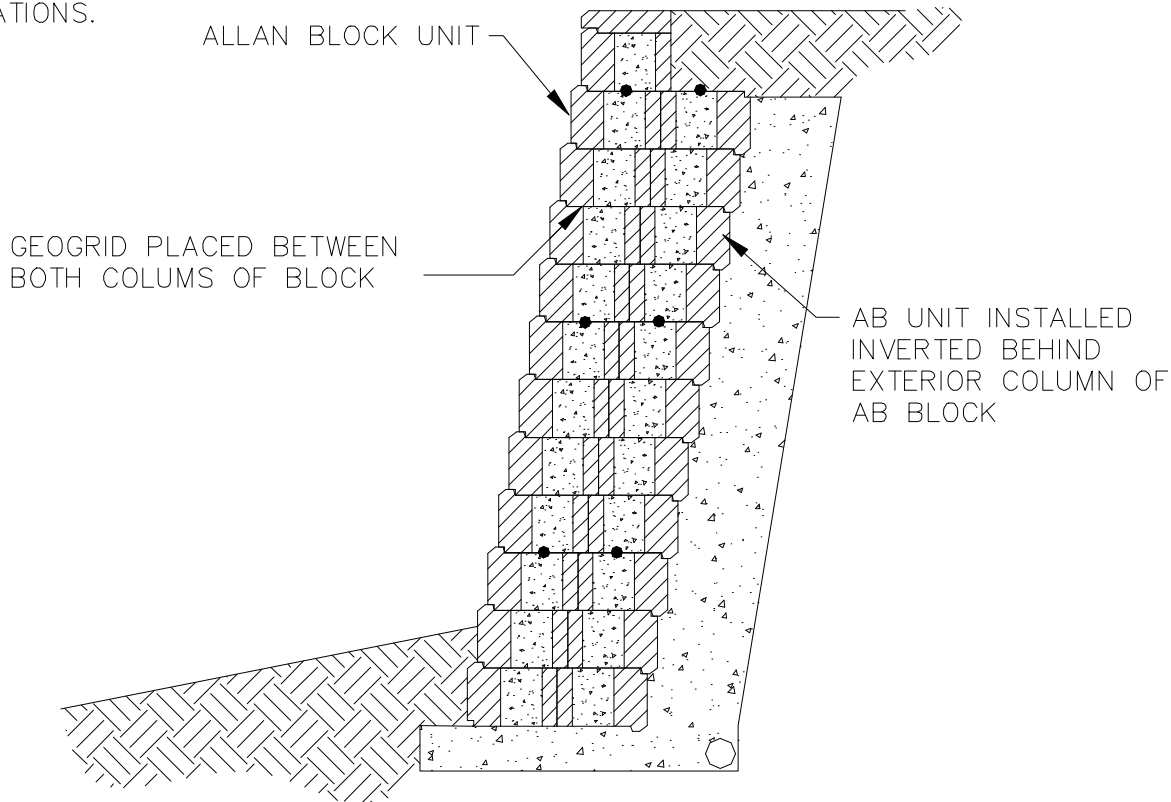
* REFER TO SECTION 1:
ALLAN BLOCK TYPICAL
SECTION FOR ALL OTHER
NOTES, DETAILS AND
SPECIFICATIONS.

GEOGRID MUST BE
AT LEAST TWO
COURSES BELOW
TOP OF WALL



SECCION TIPICA DE MURO DOBLE

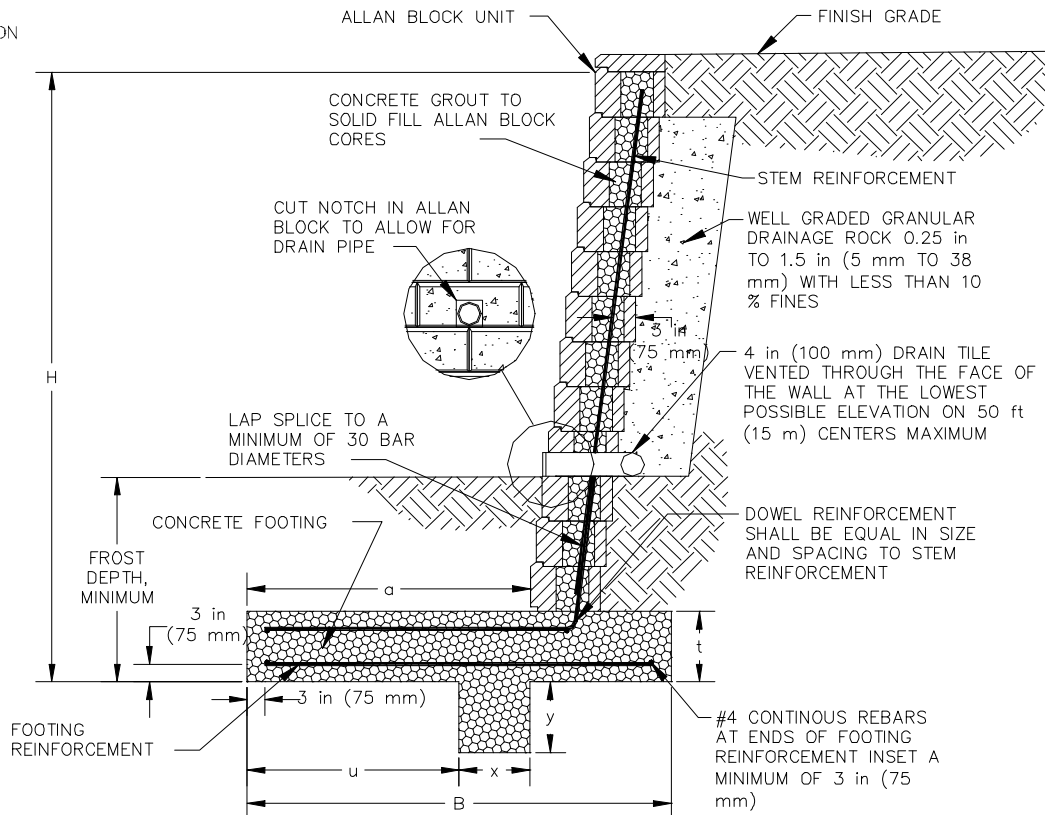
- * REFER TO SECTION 1:
ALLAN BLOCK TYPICAL
SECTION FOR ALL OTHER
NOTES, DETAILS AND
SPECIFICATIONS.



MURO REFORZADO CON HORMIGON

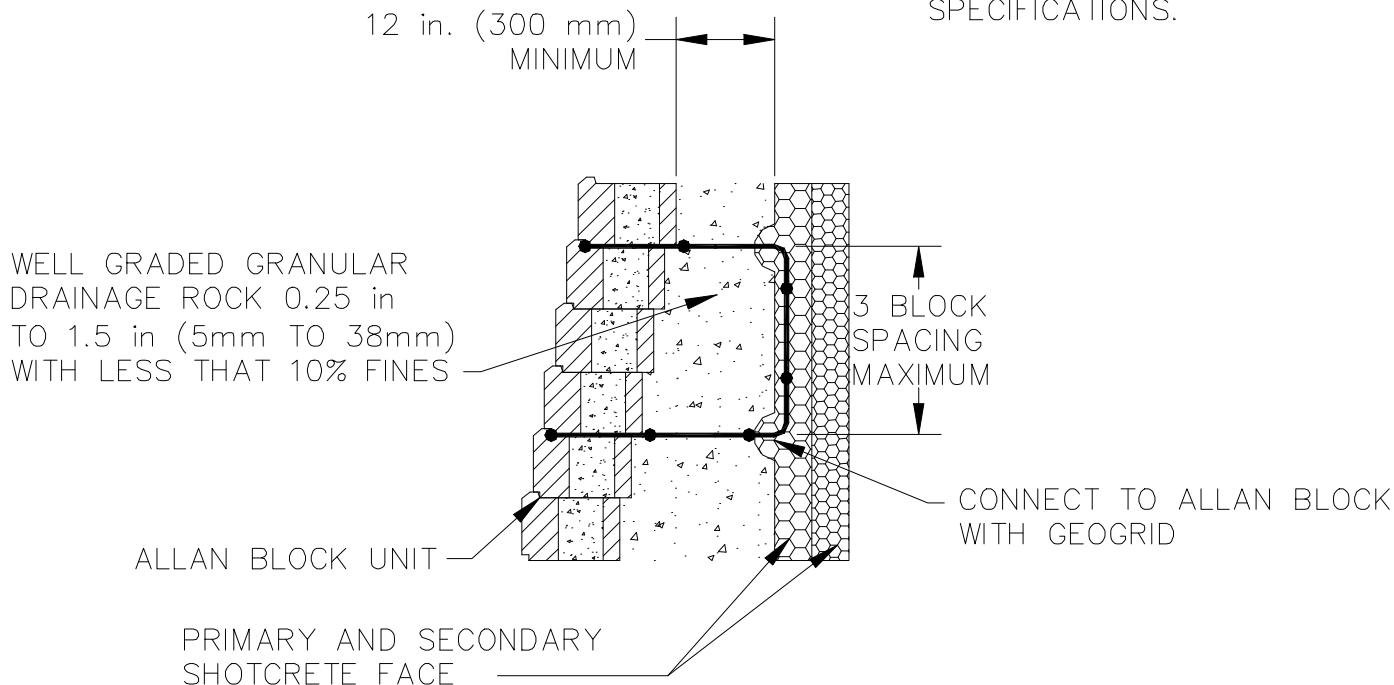
* ALL SPECIFICATIONS WITH REGARDS TO COMPACTION AND DRAINAGE ARE APPLICABLE TO THE ALLAN BLOCK MASONRY REINFORCED CROSS SECTION.

* MASONRY DESIGN AND CONSTRUCTION REQUIRES SITE SPECIFIC ANALYSIS FOR EVERY WALL CASE. CONTACT ALLAN BLOCK CORPORATION OR A QUALIFIED LOCAL ENGINEER FOR ASSISTANCE.



MURO ENFRENTADO DE HORMIGON PROYECTADO

* REFER TO SECTION 1:
ALLAN BLOCK TYPICAL
SECTION FOR ALL OTHER
NOTES, DETAILS AND
SPECIFICATIONS.



ANCLAJES ESPECIALES AL TERRENO

* REFER TO SECTION 1:
ALLAN BLOCK TYPICAL
SECTION FOR ALL OTHER
NOTES, DETAILS AND
SPECIFICATIONS.

